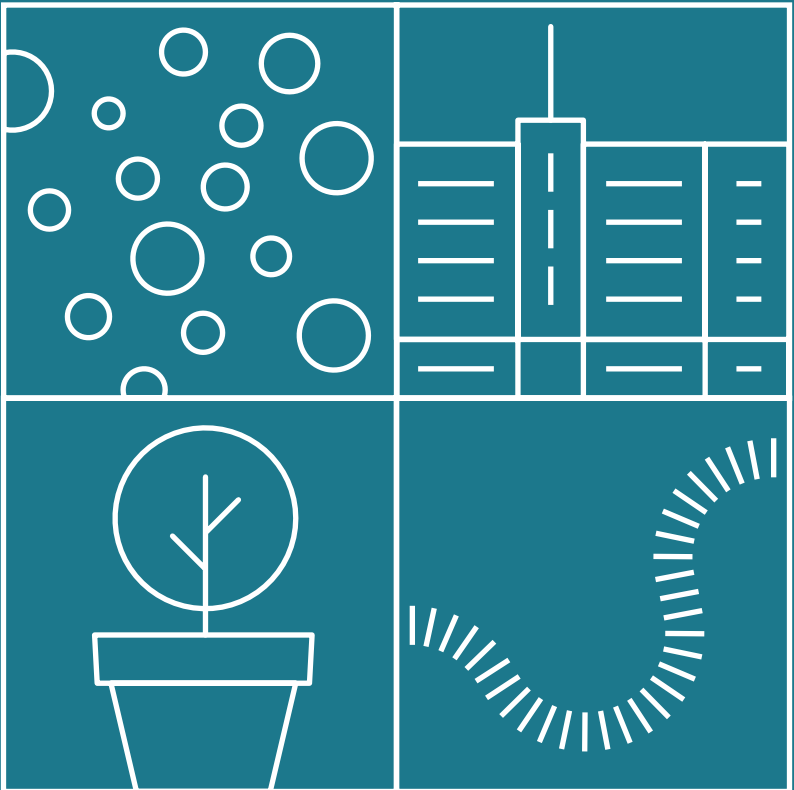


Sustainability Strategies

Sustainability is at the core of Streetlife's identity. There are many aspects to consider when working towards better everyday practices.



Our commitment to sustainability goes beyond surface-level initiatives—we embed sustainable thinking into every part of our design and production process. That’s where our Integrated Sustainability Strategy comes in: a framework that turns the ambition of sustainable street furniture into a tangible, everyday reality.

We focus on continuous improvement and authentic progress. Real impact flows from transparency, innovation and intentional design choices. At Streetlife, we’re on a mission to enhance public spaces through environmentally conscious design—reducing the ecological footprint while sparking creativity in every project.

Our Integrated Sustainability Strategy is built on eight core themes that shape the way we think, design and act. From the materials we select to the way we produce and transport our products—each theme plays a key role in creating meaningful, measurable impact. Streetlife also facilitates international cross-pollination, offering a platform for exchange, learning, and co-creation among leading landscape architects and designers. A trusted partner for municipalities and studios that want to build truly liveable, future ready public spaces.

Here, we explain how each pillar contributes to a more sustainable future for our cities and shared environments.



Scan the QR code to learn more
about our commitment to sustainability.

Pioneering sustainability in urban design

Our principles

At Streetlife, we advance sustainability with measurable results. Our Take-Back Programme (recycle@streetlife.com) collects, dismantles, and reuses end-of-life products. Remaining emissions are offset through global reforestation and SDG-aligned actions that support our long-term sustainability roadmap. Independent proof comes via multiple FSC® Project Certifications spanning forest to installation. A dedicated Sustainability Team continually drives new circular innovations.

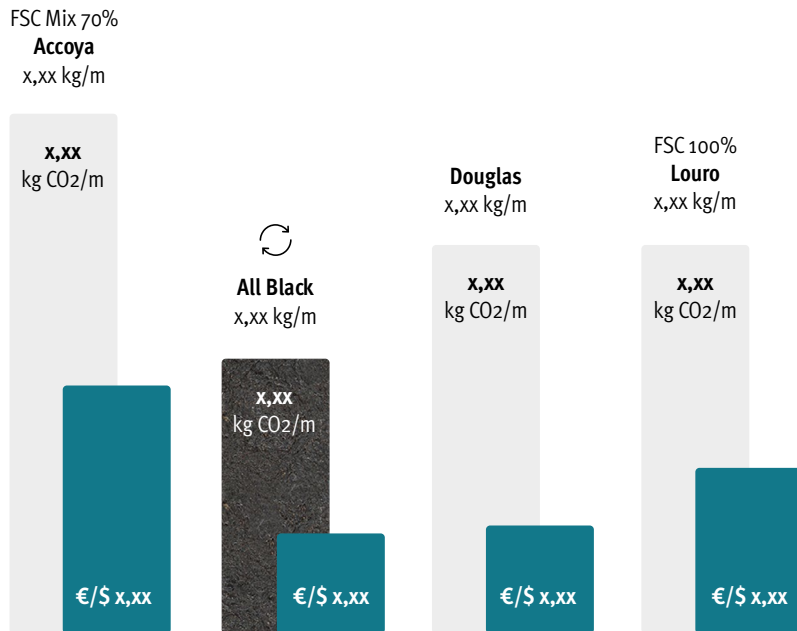


**Innovation
isn't just
about big
ideas**

Materials that matter

Materials

Material integrity defines every Streetlife product. We specify FSC®-certified (C105477) hardwoods, reclaimed timbers and “Streetlife Recyclate” from post-consumer plastics, ensuring long life with minimal upkeep and no added coatings or colourants. Bio-based composites such as Bamboo Brown further diversify our low-impact palette. Through component standardisation, we reduce off-cuts and scrap wood. Our TWIN concept lets key parts be disassembled and returned at end-of-life, feeding resources back into production. These durable, low-maintenance materials advance environmental goals, uphold urban performance and give landscape architects a circular, future-ready toolkit for benches, planters, bridges and other civic elements.



Example impact comparison of carbon footprint vs Environmental Cost Indicator (ECI)

For sustainable, green urban spaces

Urban Greening

Urban spaces should do more than function—they should uplift and support well-being. Green placemaking is central to our approach: plant-based solutions that restore vibrancy and biodiversity. Green roofs, vertical systems, and modular planters rebuild ecosystems. Our greening and Street Screens offer cooling shade, reduce energy use, and support climate goals—making cities more resilient.





**Aesthetic
identity with
sustainability**

For today with tomorrow in mind

Design

Our design pairs a distinct aesthetic with rigorous sustainability. Each collection is built for decades of low-maintenance use. Modular layouts and parametric tools let architects customise freely while preserving the Streetlife signature. Clean lines, a restrained natural palette and standardised beam sizes create a timeless, resource-efficient style. The Streetlife style offers architects a durable, adaptable, and eco-conscious base for lasting public spaces.

For precision and performance

Detailing & Smart Solutions

At Streetlife, innovation is built into the details. Every feature serves a purpose—simpler upkeep, modular upgrades, and minimal waste. Our Fix&Replace-concept allows beams to be rotated or swapped without replacing full units, while standardised slats reduce off-cuts. The Streetlock system enables easy removal and reuse of parts. This same thinking applies to greening. TreeTec® biodegradable columns protect roots and our material responsibility.

With global reach, local impact, and uncompromising quality

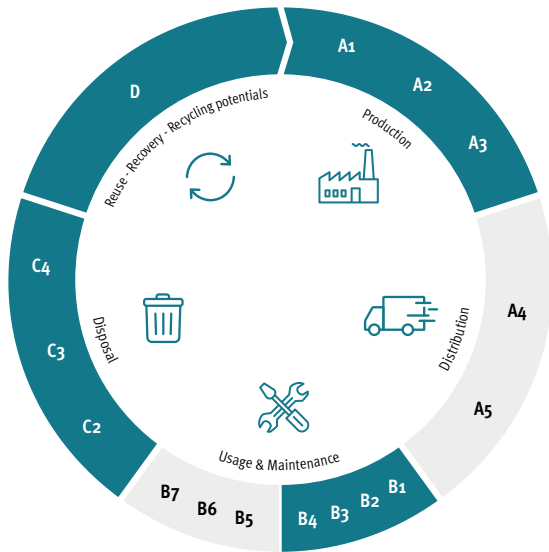
Production & Logistics

With production hubs on three continents, Streetlife manufactures near installation sites—cutting emissions and supporting local craftsmanship. We partner with those who share our values on quality and sustainability. An internal ERP system safeguards consistency. Sustainability is a journey, guided by supplier dialogue and cleaner practices—keeping Streetlife at the forefront of responsible manufacturing.

Empowering sustainable decisions through expertise

Know-How

Understanding a product’s environmental impact from start to finish is key to making sustainable choices. That’s why we integrate Life Cycle Analysis (LCA) through our Environmental Impact Sheets (EIS) into every project. We go beyond product delivery—partnering with clients to support sustainability goals through material comparisons, best-practice advice, and tailored recommendations. Streetlife also shares its expertise across the industry. We offer CPD-accredited presentations, and knowledge exchange is central to our mission. By engaging the wider design community, we help advance sustainability in public space design.



- | | | | | | |
|----|---|----|------------------------------|----|--|
| A1 | Raw material extraction, secondary material input | B1 | Use of the installed product | C1 | De-construction, demolition |
| A2 | Transport to the manufacturer | B2 | Maintenance | C2 | Transport to waste processing |
| A3 | Manufacturing | B3 | Repair | C3 | Waste processing for reuse, recovery and/or recycling |
| A4 | Transport to the building site | B4 | Replacement | C4 | Disposal |
| A5 | Installation on site | B5 | Refurbishment | D | Reuse, recovery and/ or recycling potential, expressed as net impact and benefit |
| | | B6 | Operational energy use | | |
| | | B7 | Operational water use | | |



For livable, future-ready urban realms

Public Space

Public spaces are where people come together, where memories are made, and where cities come alive. Streetlife’s designs encourage social interaction, encourage outdoor activities, and support overall well-being. We believe well-designed public spaces naturally promote connection. Our products are created to invite people to gather, converse, and relax outdoors. Accessible, inclusive, and visually appealing spaces feel safer, are better maintained, and are more actively used.

Our Principles



- Internal sustainable awareness, drive to improve, but critical and factual
- Take-Back program
- Impact compensation
- FSC®-certified organisation

Design



- Longevity: Designed to last
 - Modular elements
- Parametric design; tailor-made products
- Timeless Design

Materials



- Responsible & durable material usage
- Reused wood & Recyclates ♻
- FSC® certified (hard)wood



- Quality Control
- Sustainable local partners
- Local production on three continents



Production & Logistics

- Designed for ease of repair and maintenance
 - Treetec tree care
- Using Scrap Wood
- Streetlock mounting system



Detailing & Smart Solutions

- CPD-accredited presentations
 - LCA & Environmental Impact Sheets
- Help clients to make choices to achieve their sustainability goals
- Material comparison



Know-How

Our Integrated Sustainability Strategies help us make sustainable street furniture a reality

STREETLIFE BV *Head Office*

Herengracht 36, 2312 LD Leiden, The Netherlands
T +31 (0)71 333 33 33 | streetlife@streetlife.com

STREETLIFE USA Inc *Philadelphia, PA*

T 001 215 247 0148 | usa@streetlife.com

STREETLIFE Australia Ltd *Sydney*

T 0061 2 7908 6513 | australia@streetlife.com

Visit www.streetlife.com or follow us on

  Streetlife BV  [streetlifedesign](https://twitter.com/streetlifedesign)

If you would like to know more about end-of-life take-back of Streetlife products, please contact us at recycle@streetlife.com.

FSC® License number: C105477